

StrataSync™

Cloud-Enabled Asset and Test-Data Management



Key Benefits

- Reduces OpEx — improves first-dispatch success rates and lowers instrument-management overhead
- Simplifies instrument management — lets supervisors ensure devices are up-to-date with the most recent firmware, correct instrument test options, and the right test configurations
- Unlocks the power of test data — automates uploads of test results and pass/fail status via the cloud
- Optimizes performance — empowers the workforce with the latest announcements, release notes, manuals, and training videos

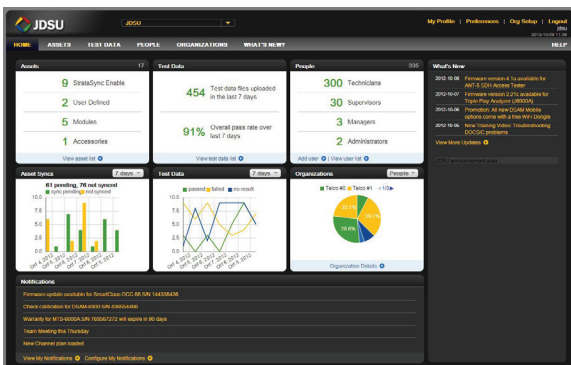
Features

- Cloud-enabled architecture provides easy network access, unmatched scalability, and high availability
- Single, intuitive, browser-based interface tracks and upgrades instruments and displays, prints, stores, and exports test results
- Complete asset management also tracks non-JDSU instruments
- Automated features quickly and easily update instrument firmware, options, and configuration files
- Template creation and alignment to instruments ensures technicians always have correct configurations
- Quickly uploads test results to a centralized storage warehouse for analysis to benchmark service and provide insight into network performance

StrataSync is a hosted, cloud-based software application that provides asset, configuration, and test-data management of JDSU instruments. StrataSync manages inventory, test results, and performance data anywhere with browser-based ease and improves technician and instrument efficiency.

StrataSync offers:

- **Updates and Options** — field personnel operate at maximum capability and efficiency by knowing immediately when firmware upgrades and instrument options are available. They receive proactive, application-aware notifications, and distribution is managed for specific groups or individuals.
- **Asset and Configuration Management** — user-authored standard templates to ensure instruments are aligned to a specific configuration. StrataSync lets users monitor and update asset data, modules, configurations, test plans and scripts, templates, and groups, ensuring technicians consistently have the right instrument configurations when performing tests—increasing first-time success rates and reducing repeat rates.
- **Test-Data Management** — a common test data repository makes baselining performance practical, and enables the analysis of network trends for proactive maintenance, improved reliability, and customer satisfaction. StrataSync performs file storage, printing, and exporting, and provides clear dashboards and basic reports.
- **What's New@JDSU** — instant workforce access to the latest content from JDSU, including release notes and training material, ensures that field personnel are always trained, informed, and updated.



Example of StrataSync dashboard

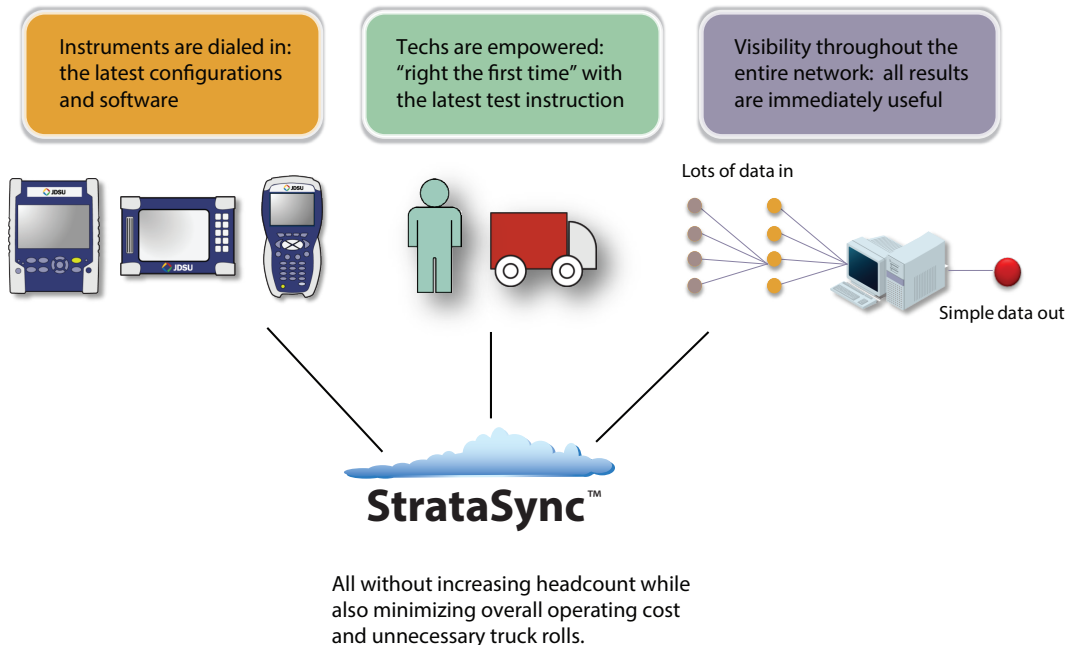
Asset Management

StrataSync asset management provides a single, intuitive way to monitor and upgrade assets in the field and office. An administrator can quickly identify out-of-date and under-utilized test sets and target updates and the reallocation of assets. With StrataSync, registration identifies which test units are assigned to each technician. StrataSync tracks each test-set sync with the server, making utilization and test practices visible. Post-analysis of circuit compliance and technician activity provides near-real-time coaching opportunities.

Upgrades can be applied automatically during the normal work-order process, as technicians use their test sets in the field. This dramatically reduces the amount of time spent in the work center determining the fit-for-purpose status of the test set, identifying upgrade requirements, and then manually upgrading the test set.

Test-Data Management

StrataSync stores test data in a central location, enabling viewing and sharing of test-data results. Often, data is not centrally collected and its long-term value is underrated. The causes of repeat truck rolls are obscure, and data from previous tests is not available or is not analyzed. With StrataSync, critical plant-performance information is stored in a secure location, enabling proactive problem-area identification.



North America
Tel: 1 855 ASK-JDSU
1 855 275-5378

Latin America
Tel: +1 954 688 5660
Fax: +1 954 345 4668

Asia Pacific
Tel: +852 2892 0990
Fax: +852 2892 0770

EMEA
Tel: +49 7121 86 2222
Fax: +49 7172 86 1222

www.jdsu.com/test